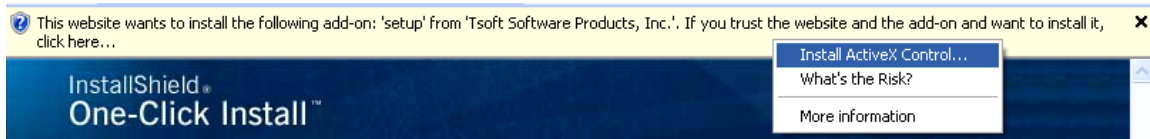


Dojo Master Online

Demonstration Version Installation & Setup Instructions

1. From the Dojo Master Online Demo Page, Click the [Click Here to Download the Dojo Master Online Demo](#) link.
2. You will receive a separate InstallShield Installation Window. This screen will give you an estimate for how long the download will take for various connection speeds. Click the Install button to continue. After you click Install, there will be a several minute pause, while the first portion of the installation is downloaded.
3. Depending on your Internet Security Settings, you may receive a message box at the top of the Installation Browser Window, asking for permission to install the ActiveX Module that will control the installation. To continue, right-click on the message area and select "Install ActiveX Control" from the pull-down list.



4. Before or after the message described in Step 4, you may also receive a separate message box asking if you would like to close the Installation Browser Window. If you receive this message box, at this time, Click NO to continue with the installation.
5. The final security window will ask: "Do You want to install this software?". Click the Install button to continue.



6. Once all security screens have been satisfied, the installation will begin with the window displayed below. Click Next to continue.



7. The next window gives you the opportunity to select the folder name that the Dojo Master Online Demo will be installed in. To use the default folder (Recommended), click the Next button at the bottom of the screen. To change the installation folder, click the Change button near the top of the screen.

The next screen will ask you to approve the folder selection from Step 8. Click the Install Button to continue, or the Back Button to change your folder selections.

8. While the installation is copying files, you will receive a progress bar near the bottom of the Installation Window. When all files have been copied, Click the Finish button on the Completed Screen. When asked if you'd like to close the browser window, click Yes. Installation is now complete and you may proceed to Initial Setup.

INITIAL START-UP

1. Click your Start Button and go to Programs/Dojo Master Online Demo/Dojo Master.
2. When the Dojo Master starts, it will request a login password. Enter MASTER (in all caps) in the provided space and press Enter.
3. After logging on, you will be routed to the Dojo Master Main Menu, and you may begin your self-guided tour. Always remember, Help is available by pressing the F1 key.

SECURITY NOTE

Even in the Demo Version, Dojo Master will access the internet to perform credit card verifications and test charges. If you are using a firewall program or other security features, you may be asked if you wish to allow Dojo Master to access the internet. You will need to allow this access if you wish to review all of Dojo Master's electronic payment features in action.